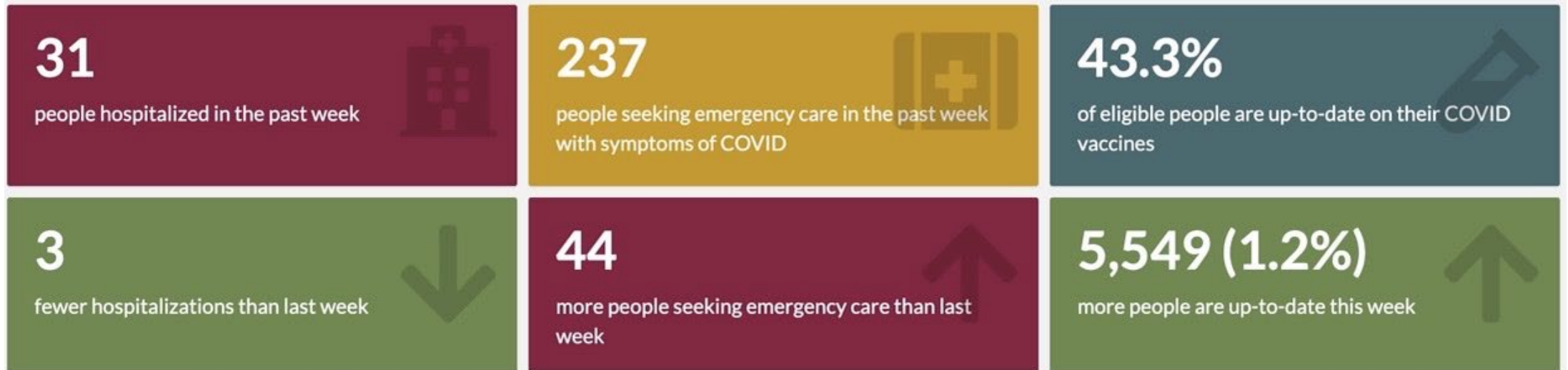


Administrative updates

May 24, 2022



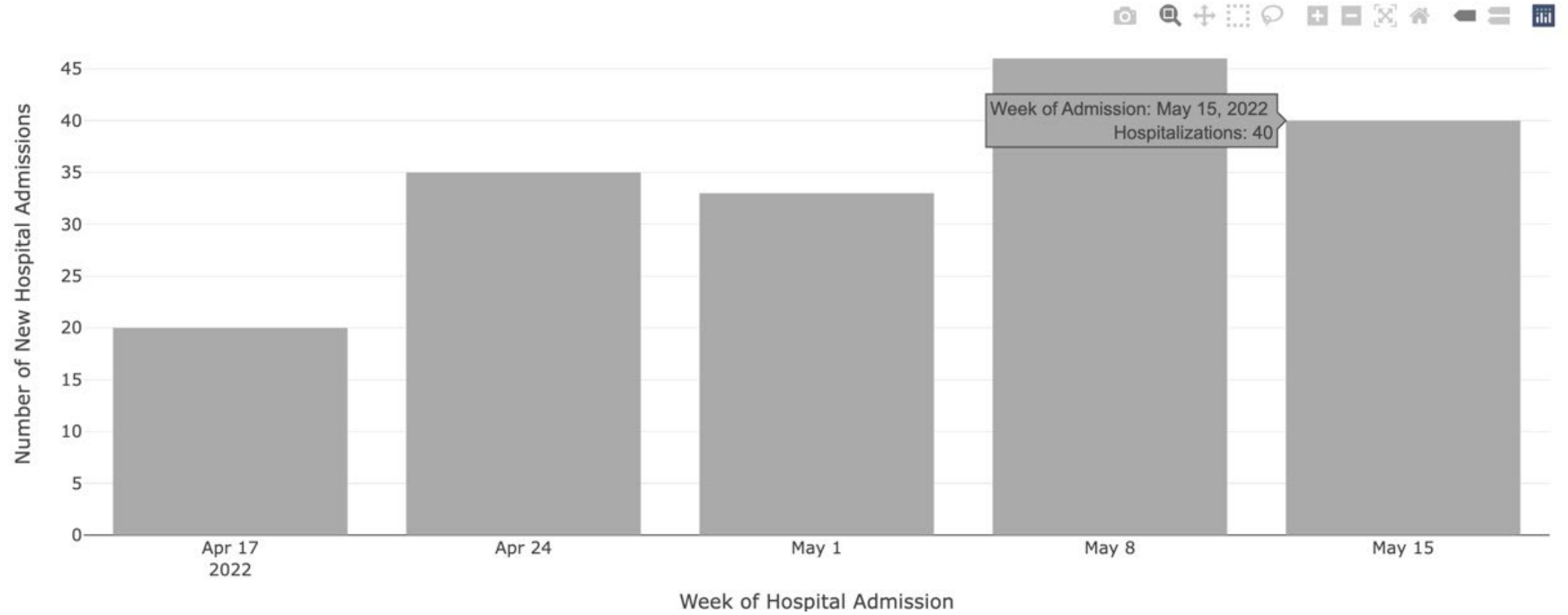
Last week



This week



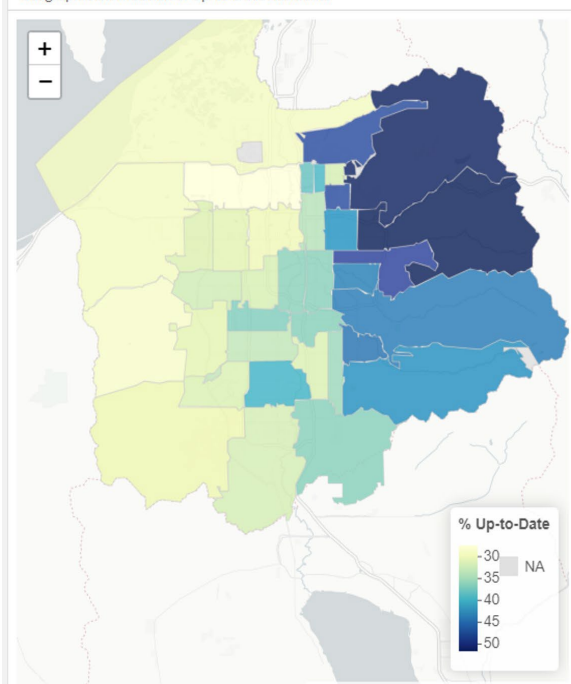
Hospitalizations in the past month



April 19 – May 24

COVID-19 Vaccination Coverage

Geographic Distribution of Up-to-Date Residents



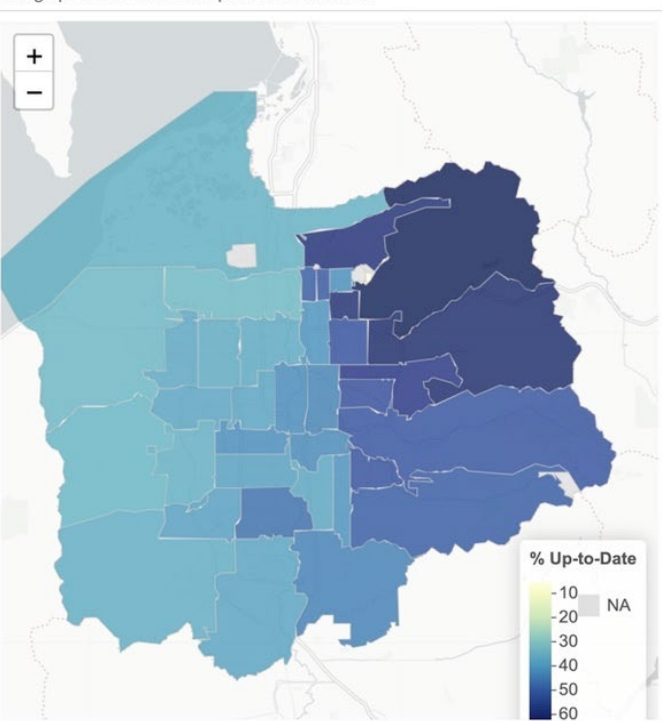
ZIP Codes with Highest and Lowest Up-to-Date Coverage

Show entries Search:

ZIP Code	City	Percent Up-to-Date
Highest Up-to-Date Coverage		
84109	Salt Lake City	51.5
84108	Salt Lake City	51.2
84112	Salt Lake City	51
84124	Salt Lake City	47.9
84105	Salt Lake City	47.1
Lowest Up-to-Date Coverage		
84104	Salt Lake City	27.6
84006	Bingham Canyon	28.9
84116	Salt Lake City	29.3
84044	Magna	29.5
84119	Salt Lake City	30.1

Showing 1 to 10 of 10 entries Previous Next

Geographic Distribution of Up-to-Date Residents



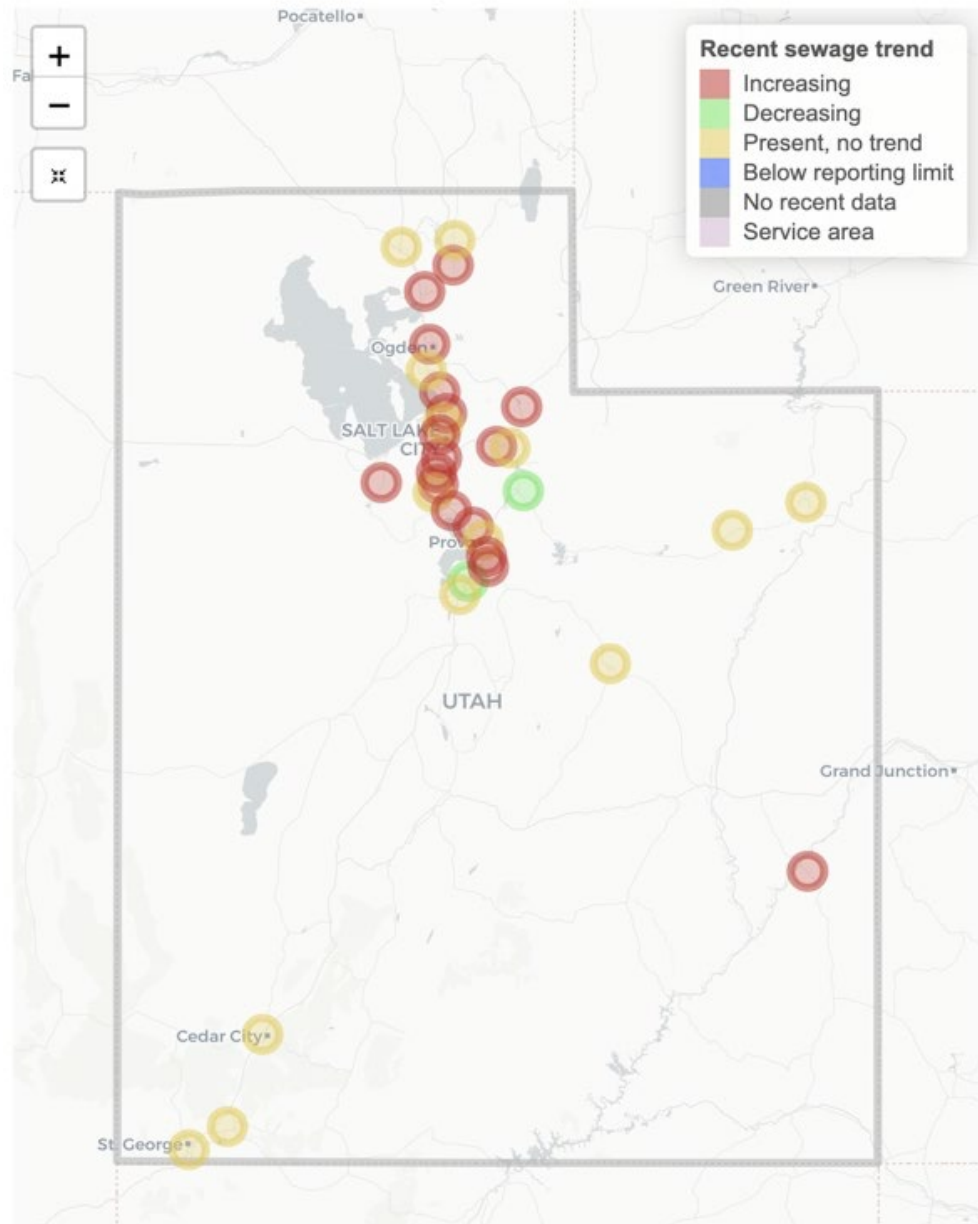
ZIP Codes with Highest and Lowest Up-to-Date Coverage

Show entries Search:

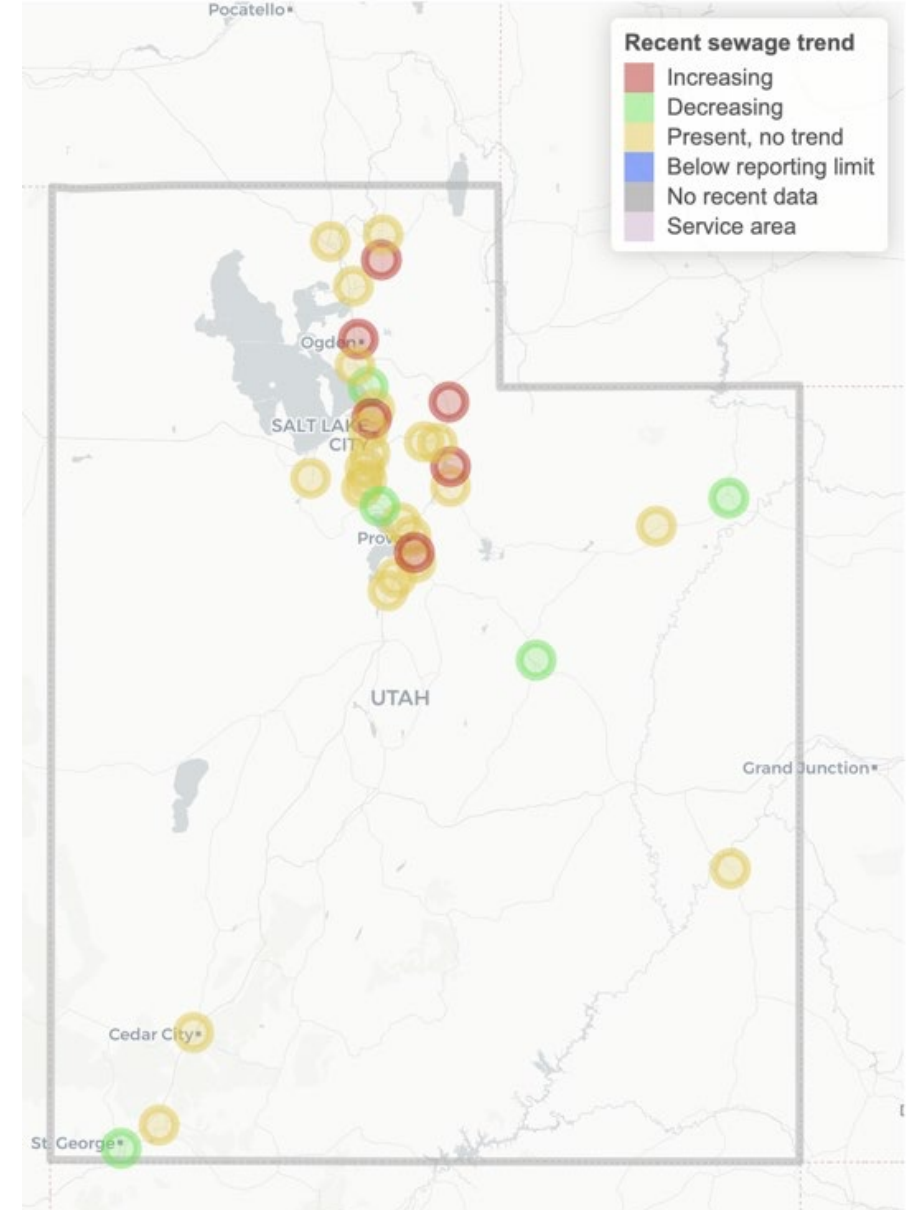
ZIP Code	City	Percent Up-to-Date
Highest Up-to-Date Coverage		
84108	Salt Lake City	62.8
84109	Salt Lake City	60.5
84105	Salt Lake City	59.4
84103	Salt Lake City	59
84124	Salt Lake City	57.6
Lowest Up-to-Date Coverage		
84113	Salt Lake City	5.9
84104	Salt Lake City	33.5
84044	Magna	34
84006	Bingham Canyon	34.6
84116	Salt Lake City	35.5

Showing 1 to 10 of 10 entries Previous Next

Last week



This week

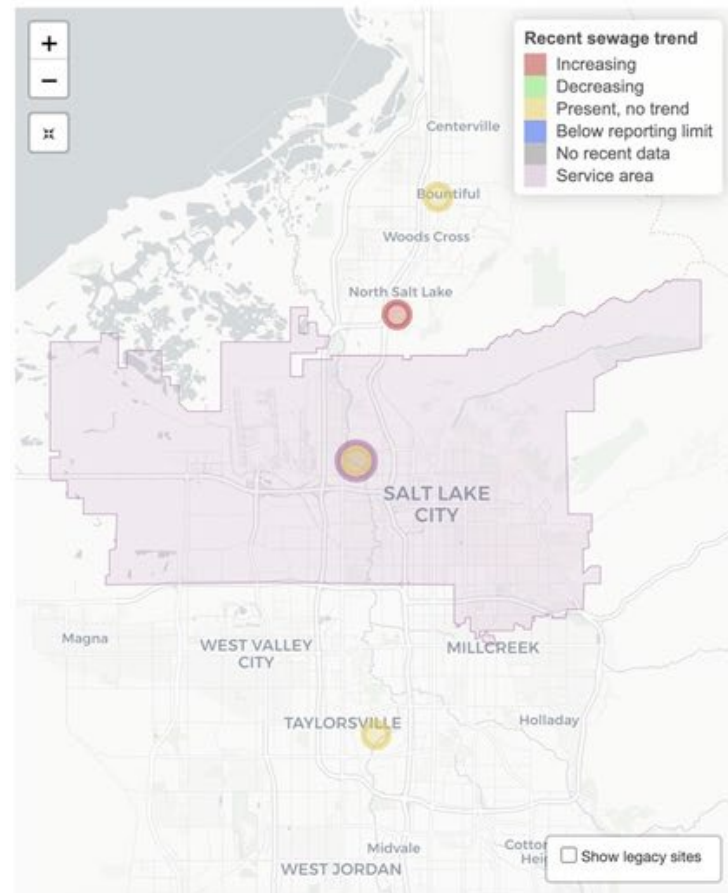


Salt Lake City WRF

Estimated population served: 209,645



Click a location to display data

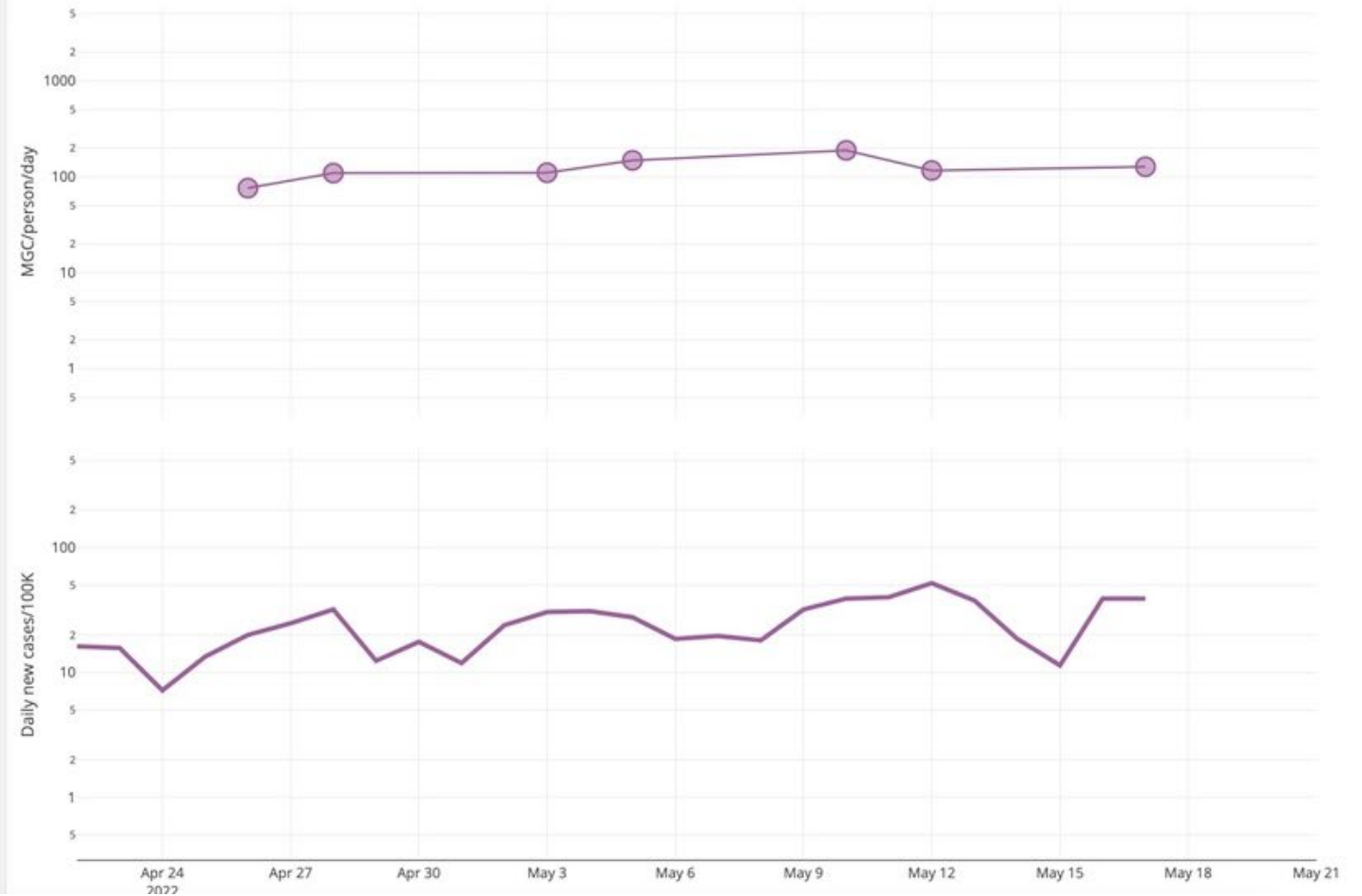


Monitoring results and case counts Sewage non-detections plotted at 1. MGC = million gene copies. Sewersheds with 1-5 cases plotted at rate of 2.

All data

☒ Past month

Log y-axes ☒



COVID-19 update

Current status summary

An average of **339 cases per day** were reported in Salt Lake County, a **46 percent increase** from the average two weeks ago.

Despite the increase, community levels in Salt Lake County are still considered low based on hospitalizations and deaths.

Community Engagement Highlights

www.slc.gov/feedback/

Regularly updated with ways to engage with the City.



Weston Clark
Director of Community Outreach



Ashley Cleveland
Deputy Director of Community Outreach
Ashley.Cleveland@slcgov.com



Tim Cosgrove
Community Liaison, Districts 5 & 7
Tim.Cosgrove@slcgov.com
ph: 801-535-7238



Eva Lopez
Community Liaison, District 4 | LGBTQ Liaison
Eva.Lopez@slcgov.com
ph: 385-479-1410



Joshua Rebollo
Community Liaison, Districts 1 & 2
Joshua.Rebollo@slcgov.com
ph: 801-535-7976

Transportation

- **Virginia Restriping**

- Survey opened www.slc.gov/mystreet/virginia

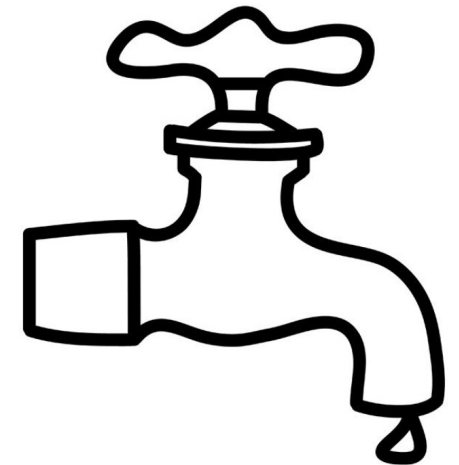
- **2100 South Reconstruction**

- Intercept Surveys tomorrow



Sustainability

- **Waste Rate Increase**
 - www.slcgreen.com/rates
 - Mailers landed last week
- **Electric Vehicle Ready Ordinance**
 - Open comment period as begun
 - Through June 3rd



Housing Stability

- **HUD 2022-2023 Annual Action Plan**
 - CDBG, HOME, ESG, and HOPWA
 - Public Comment period May 25th – June 24th 2022



Homelessness Update:

HRC and Overflow Occupancy

May 9th - 13th

	STH - 1 000 West Men's HRC	STH - King Women's HRC	STH - Miller Mixed HRC	Total
Shelter Capacity	300	200	200	700
Avg number of beds occupied/night	289	194	197	681
Avg number of beds unoccupied/night	11	6	3	19
Avg % of beds occupied/night	96.3%	97.1%	98.6%	97.2%
Avg % of beds unoccupied/night	3.7%	2.9%	1.4%	2.8%

Homelessness Update

Contact/ Intake:
801-990-9999

Cleaning and Abatelements

Victory Road Followup this week

Kayak Court Fri May 20th @ Jordan River

Justice Court

Ruff Haven

Jordan River Commission

GREENbike

Next Resource Fair:

June 10th- Location TBA

Winter Overflow Shelter Update

HB 440/ C.O.M. Process

- May- Funding/ Operator discussions (ongoing)
- June- Present ranked list to full COM
- July- COM vote on proposed site(s)
- Aug- COM present choice(s) to COG
- Sept 1- Deadline for feasible plan submission
- Oct- Opening of overflow(s)